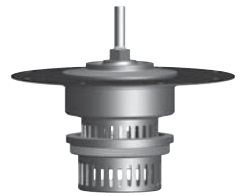
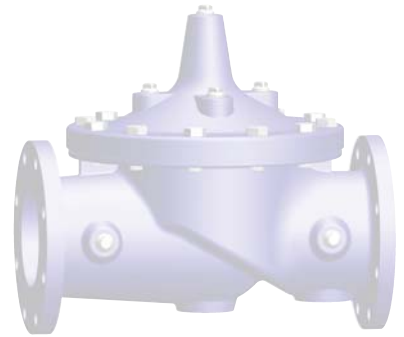




C L A - V A L U E A D D E D L



Specify • Optimize • Retrofit

Specify • Optimize • Retrofit

There are so many ways to get more from Cla-Val Automatic Control Valves...

For new valves, it's best to include add-on features like those listed below during the specification process. Next best is to add supplemental features at the time of order placement. For existing, installed valves, it's never too late to retrofit or upgrade them to include new features and functions.

When you are facing an operational challenge, please consider the many accessories that can be included on your basic valves to enhance performance and get more from your investment in Cla-Val products.

Electronic Accessories.....Page 2

- 133VF Metering Kit
- X105L Limit Switch Assembly
- X117C/D Position Transmitters

System Safeguards.....Page 5

- KO Anti-Cavitation Trim
- Hydraulic Back-Up for Electronic Valves
- X140-1 Locking Cap for Pilots
- X43H-Style Strainer

Functional Enhancements.....Page 3

- CV Speed Control
- Check Valve with Isolation Valve
- CK2 Isolation Valve

Information Gathering.....Page 6

- X141 Pressure Gauges
- X101 Position Indicator
- X101C Position Indicator

Service Life Enhancements.....Page 4

- Stainless Steel Tubing and Fittings
- Epoxy Coating
- Stem Upgrades:
 - Delrin®
 - Dura-Kleen®

**Log-on to www.cla-val.com
to learn more about Cla-Val's
extensive product offering**

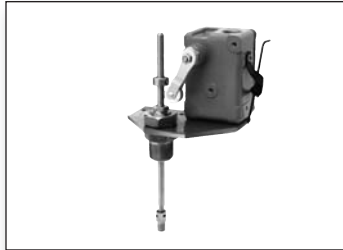
**Call the factory at 800.942.6326 to
contact a technical advisor**

Electronic Accessories and Enhancements



133VF Metering Kit

- When the metering kit is added to a Cla-Val Automatic Control Valve, no external meter is required
- Allows valve to control and measure flow simultaneously
- Does not affect other valve functions such as pressure reducing, rate-of-flow control, or pressure relief
- Can be added to new valves or retrofitted to an existing, installed valve without removal of the valve from the pipeline
- Completely self-contained, requiring 12 to 24 VDC
- Takes up less space than a typical meter



X105L Limit Switch Assembly

- UL Listed switches available
- Actuated by the opening or closing of the valve on which it is mounted
- Weather-sealed and explosion proof
- Easy to adjust and can be field retrofitted to most Cla-Val control valves
- Ideal for many applications including process control, pump control, and motor starting or stopping



X117D Valve Position Transmitter

- Accurately monitors and transmits valve position
- Use with the 131VC Series Electronic Valve Controller
- 4-20 mA output signal
- Easily interfaced with SCADA
- Environmentally sealed to IP-68
- Can be field retrofitted without removal of the valve from the pipeline



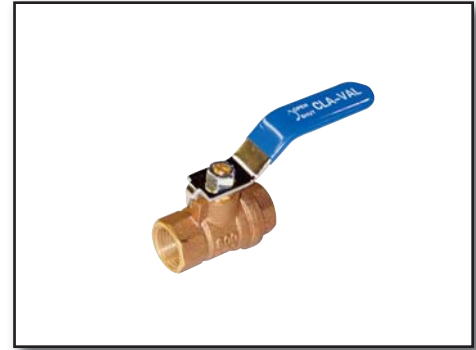
X117E Contact-Free Valve Position Transmitter

- Accurately monitors and transmits valve position
- Contact free configuration assures longer service life
- No o-rings to replace, less maintenance
- 4-20 mA output signal
- Easily interfaced with SCADA
- Environmentally sealed to IP-68
- Can be field retrofitted without removal of the valve from the pipeline

Functional Enhancements

“B” Feature: CK2 Isolation Valve

- Allows operator to manually override the automatic functions of the valve
- Enables operator to easily perform field testing of the main valve without removing the valve from the pipeline
- Provides a means to isolate individual sections of the pilot system
- Field retrofittable



“D” Feature: Check Valve with Isolation Valve

- Provides return flow protection in systems where there is a potential for the outlet pressure to be greater than the inlet pressure
- Enables an automatic control valve to also act as a check valve without disrupting primary function
- Retrofittable without removal of the valve from the pipeline
- Eliminates the need for a separate check valve in the system in the area adjacent to the control valve



“S” Feature: CV Speed Control

- Controls valve opening and closing speed
- Adjustable restriction device that acts as a needle valve when flow is in the direction of the stem
- When flow is in the reverse direction, the port opens fully to allow unrestricted flow
- Corrosion resistant, requires no lubrication
- Automatic operation in any position
- Simple to adjust and maintain



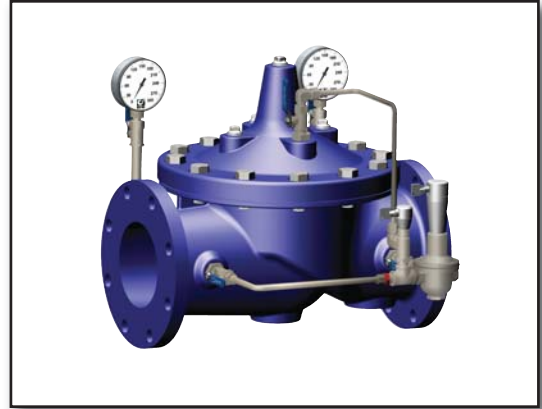
Log-on to www.cla-val.com
for a comprehensive overview of
Cla-Val's product offering

Call the factory at 800.942.6326 to
contact a technical advisor

Service Life Enhancements

Optional Stainless Steel Tubing & Fittings

- Specify Stainless Steel trim to ensure maximum durability and the following benefits:
 - Corrosion resistance
 - Fire and heat resistance
 - Inherently longer service life than other materials
 - Impact resistance
 - Strength-to-Weight advantage
 - Hygienic
 - Aesthetically pleasing for visible installations



Optional Epoxy Coating

- NSF and AWWA approved for potable water applications
- Provides long term corrosion protection
- Fusion bonded coating adheres more permanently to the valves
- Affords greater protection against gouging, rough handling, wear and abrasion
- Resistant to cathodic disbondment
- More aesthetically pleasing than other coatings



Optional Dura-Kleen™ Stem

- Ideal for harsh water applications, especially those prone to calcium build-up
- Patented fluted surface of the Stainless Steel Dura-Kleen™ stem channels away deposits from the stem
- Frictionless operation
- Excellent preventative measure against stem issues arising in continuous service



Optional Delrin® Sleeve Stem

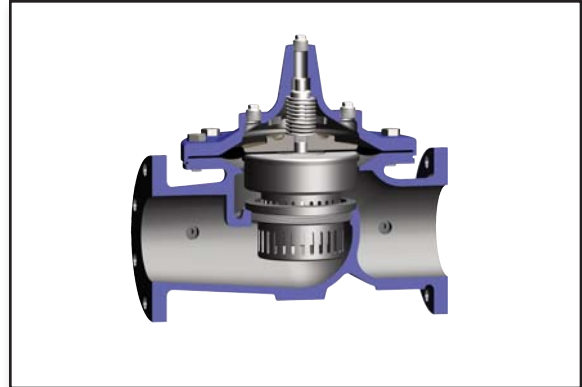
- Ideal for harsh water applications with low differentials
- Chemically resistant with very low water adsorption
- Resistant to build-up
- Provides maximum durability because of the high stiffness and excellent dimensional stability of the Delrin® sleeve
- Frictionless operation



System Safeguards/Enhancements

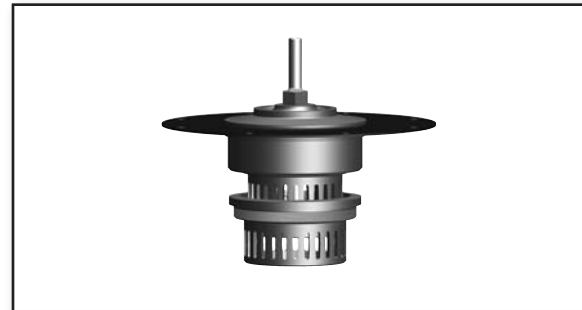
Optional KO Anti-Cavitation Trim for New 100-01 Hytrol Valves

- Install in any Cla-Val Automatic Control valve for virtually cavitation free operation
- Ideal for applications with high pressure differentials or discharging to atmosphere
- Standard 316 Stainless Steel disc guide and seat
- Reduces noise and vibration
- Drip-tight, positive sealing
- Available in sizes from 1½" - 36"



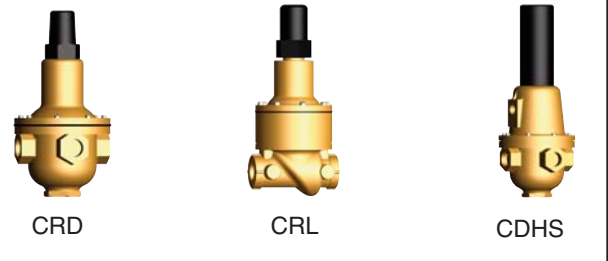
KO Anti-Cavitation Trim Field Conversion Kit for Existing, Installed 100-01 Hytrol Valves

- Retrofit an existing, installed Cla-Val Automatic Control Valve with the KO Anti-Cavitation Conversion Kit to make it cavitation proof
- Experience all the benefits of new KO Anti-Cavitation Valve when the conversion kit is added to your valve without removing from the pipeline



Hydraulic Back-Up for Electronic Valves

- 131 Series and 133 Series Electronic Control Valves can be equipped with a hydraulic pilot control that will enable the valve to operate in the event of power loss
- Can be field retrofitted without removing the valve from the pipeline



X140-1 316 Stainless Steel Locking Security Cap

- Stainless Steel cap encapsulates the pilot control's adjustment screw to prevent unauthorized access
- Available in three sizes
- Can be field retrofitted to an existing, installed pilot system



X43H H-Style Strainer

- Provides an effective means of removing unwanted solid particles in pipeline flow
- Prevents fouling and debris build-up in Cla-Val Automatic Control Valves
- Standard 316 Stainless Steel strainer mesh
- Standard Ductile Iron, Fusion Bonded, Epoxy Coated body for maximum durability
- Easy maintenance enabled by compact H-Style design
- Takes up less space than other pipeline strainers



Information Gathering

“P” Feature: X141 Gauges for New or Existing Valves

- Stainless Steel construction
- Available in 2½" - 4" sizes
- Provides easy access to pressure data
- Enables user to perform diagnostic performance testing of valve
- Gauge is equipped with an isolation valve for easy installation and change-out
- Can be easily field retrofitted to any Cla-Val Automatic Control Valve



“V” Feature: X101 Valve Position Indicator

- Provides quick and easy access to valve position information
- Equipped with a vent valve to exhaust any air that is trapped in the valve cover
- Leak-proof and frictionless operation
- Protected indicator rod encased in Pyrex tube
- Stainless Steel available



X101C Valve Position Indicator - FM Approved

- Displays easy-to-read indication of valve position
- Frictionless, leak proof operation
- Included on FM Approved valve in 3", 4", 6" and 8" sizes
- Easy to retrofit to an existing, installed Cla-Val Automatic Control Valve



GLOBAL HEADQUARTERS

P.O. Box 1325
Newport Beach, CA 92659-0325
Phone: (949) 722-4800
800-942-6326
Fax: (949) 548-5441
www.cla-val.com
E-mail: claval@cla-val.com



US WESTERN REGION

11626 Sterling Avenue, Suite F
Riverside, CA 92503
Phone: (951) 687-9145
800-247-9090
Fax: (951) 687-9954
E-mail: lvanderk@cla-val.com

US SOUTHERN REGION

11500 NW Freeway, Suite #200Q
Houston, TX 77092
Phone: (713) 681-9559
800-533-8181
Fax: (713) 681-9779
E-mail: blindsey@cla-val.com

US NORTHERN REGION

P.O. Box 863
Elgin, IL 60121
280 Willard Avenue
Elgin, IL 60120
Phone: (847) 697-1413
800-238-7070
Fax: (847) 697-5549
E-mail: djurs@cla-val.com

US EASTERN REGION

6911 Richmond Highway, Suite 444
Alexandria, VA 22306
Phone: (703) 721-1923
800-451-3030
Fax: (703) 721-1927
E-mail: bmoore@cla-val.com

CLA-VAL EUROPE

Chemin des Mesanges 1
CH-1032 Romanel/Lausanne Switzerland
Phone: 41-21-643-15-55 • Fax: 41-21-643-15-50
E-mail: cla-val@cla-val.ch

CLA-VAL UK

Dainton House, Goods Station Road
GB - Tunbridge Wells
Kent TN1 2 DH England
Phone: 44-1892-514-400 • Fax: 44-1892-543-423
E-mail: info@cla-val.co.uk

CLA-VAL FRANCE

Porte du Grand Lyon 1
ZAC du Champ du Périer
France - 01700 Neyron
Phone: 33-4-72-25-92-93 • Fax: 33-4-72-25-04-17
E-mail: cla-val@cla-val.fr

CLA-VAL CANADA

4687 Christie Drive
Beamsville, Ontario
Canada L0R 1B4
Phone: (905) 563-4963 • Fax: (905) 563-4040
E-mail: sales@cla-val.ca

CLA-VAL PACIFIC

308 Port Hills Road
Christchurch New Zealand
Phone: 64-39644860
Fax: 64-39644876
Email: gnuthall@cla-val.com

800.942.6236
www.cla-val.com